

KIF5B Antibody (C-term)
Affinity Purified Rabbit Polyclonal Antibody (Pab)
Catalog # AP16898b**Specification**

KIF5B Antibody (C-term) - Product Information

Application	WB,E
Primary Accession	P33176
Other Accession	Q2POA9 , Q61768 , NP_004512.1
Reactivity	Human, Mouse
Predicted	Rat
Host	Rabbit
Clonality	Polyclonal
Isotype	Rabbit IgG
Calculated MW	109685
Antigen Region	867-895

KIF5B Antibody (C-term) - Additional Information**Gene ID** 3799**Other Names**

Kinesin-1 heavy chain, Conventional kinesin heavy chain, Ubiquitous kinesin heavy chain, UKHC, KIF5B, KNS, KNS1

Target/Specificity

This KIF5B antibody is generated from rabbits immunized with a KLH conjugated synthetic peptide between 867-895 amino acids from the C-terminal region of human KIF5B.

Dilution

WB~~1:1000

E~~Use at an assay dependent concentration.

Format

Purified polyclonal antibody supplied in PBS with 0.09% (W/V) sodium azide. This antibody is purified through a protein A column, followed by peptide affinity purification.

Storage

Maintain refrigerated at 2-8°C for up to 2 weeks. For long term storage store at -20°C in small aliquots to prevent freeze-thaw cycles.

Precautions

KIF5B Antibody (C-term) is for research use only and not for use in diagnostic or therapeutic procedures.

KIF5B Antibody (C-term) - Protein Information**Name** KIF5B ([HGNC:6324](#))

Synonyms KNS, KNS1

Function Microtubule-dependent motor required for normal distribution of mitochondria and lysosomes. Can induce formation of neurite-like membrane protrusions in non-neuronal cells in a ZFYVE27-dependent manner (By similarity). Regulates centrosome and nuclear positioning during mitotic entry. During the G2 phase of the cell cycle in a BICD2- dependent manner, antagonizes dynein function and drives the separation of nuclei and centrosomes (PubMed:[20386726](#)). Required for anterograde axonal transportation of MAPK8IP3/JIP3 which is essential for MAPK8IP3/JIP3 function in axon elongation (By similarity). Through binding with PLEKHM2 and ARL8B, directs lysosome movement toward microtubule plus ends (Probable). Involved in NK cell-mediated cytotoxicity. Drives the polarization of cytolytic granules and microtubule-organizing centers (MTOCs) toward the immune synapse between effector NK lymphocytes and target cells (PubMed:[24088571](#)).

Cellular Location

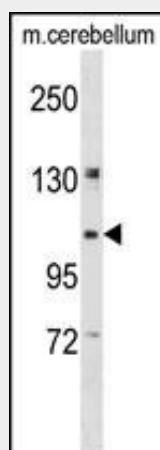
Cytoplasm, cytoskeleton {ECO:0000250|UniProtKB:Q2PQA9}. Cytolytic granule membrane. Lysosome membrane; Peripheral membrane protein; Cytoplasmic side Note=Uniformly distributed between soma and neurites in hippocampal neurons. {ECO:0000250|UniProtKB:Q2PQA9}

KIF5B Antibody (C-term) - Protocols

Provided below are standard protocols that you may find useful for product applications.

- [Western Blot](#)
- [Blocking Peptides](#)
- [Dot Blot](#)
- [Immunohistochemistry](#)
- [Immunofluorescence](#)
- [Immunoprecipitation](#)
- [Flow Cytometry](#)
- [Cell Culture](#)

KIF5B Antibody (C-term) - Images



KIF5B Antibody (C-term) (Cat. #AP16898b) western blot analysis in mouse cerebellum tissue lysates (35ug/lane). This demonstrates the KIF5B antibody detected the KIF5B protein (arrow).

KIF5B Antibody (C-term) - Background

Microtubule-dependent motor required for normal distribution of mitochondria and lysosomes (By

similarity).

KIF5B Antibody (C-term) - References

Seeger, M.A., et al. J. Biol. Chem. 285(11):8155-8162(2010)
Trejo, H.E., et al. FASEB J. 24(2):374-382(2010)
Morton, A.M., et al. Biochem. Biophys. Res. Commun. 391(1):388-393(2010)
Zadeh, A.D., et al. J. Physiol. (Lond.) 587 (PT 19), 4565-4574 (2009) :
Wong, Y.L., et al. Biophys. J. 96(7):2799-2807(2009)